

United States Department of the Interior  
National Park Service

# National Register of Historic Places Registration Form

This form is for use in nominating or requesting determinations of eligibility for individual properties or districts. See instructions in *Guidelines for Completing National Register Forms* (National Register Bulletin 16). Complete each item by marking "x" in the appropriate box or by entering the requested information. If an item does not apply to the property being documented, enter "N/A" for "not applicable." For functions, styles, materials, and areas of significance, enter only the categories and subcategories listed in the instructions. For additional space use continuation sheets (Form 10-900a). Type all entries.

### 1. Name of Property

historic name Wheeling Country Club  
other names/site number Stratford Springs

### 2. Location

street & number 355 Oglebay Drive  not for publication  
city, town Wheeling,  vicinity  
state West Virginia code WV county Ohio code WV 069 zip code 26003

### 3. Classification

Ownership of Property	Category of Property	Number of Resources within Property	
<input checked="" type="checkbox"/> private	<input type="checkbox"/> building(s)	Contributing	Noncontributing
<input type="checkbox"/> public-local	<input checked="" type="checkbox"/> district	<u>4</u>	_____ buildings
<input type="checkbox"/> public-State	<input type="checkbox"/> site	_____	_____ sites
<input type="checkbox"/> public-Federal	<input type="checkbox"/> structure	_____	_____ structures
	<input type="checkbox"/> object	_____	_____ objects
		<u>4</u>	<u>0</u> Total

Name of related multiple property listing: N/A  
Number of contributing resources previously listed in the National Register 0

### 4. State/Federal Agency Certification

As the designated authority under the National Historic Preservation Act of 1966, as amended, I hereby certify that this  nomination  request for determination of eligibility meets the documentation standards for registering properties in the National Register of Historic Places and meets the procedural and professional requirements set forth in 36 CFR Part 60. In my opinion, the property  meets  does not meet the National Register criteria.  See continuation sheet.

William G. Lamm 3/23/90  
Signature of certifying official Date

State or Federal agency and bureau \_\_\_\_\_

In my opinion, the property  meets  does not meet the National Register criteria.  See continuation sheet.

Signature of commenting or other official \_\_\_\_\_ Date \_\_\_\_\_

State or Federal agency and bureau \_\_\_\_\_

### 5. National Park Service Certification

I, hereby, certify that this property is:

entered in the National Register.  
 See continuation sheet.

determined eligible for the National Register.  See continuation sheet.

determined not eligible for the National Register.

removed from the National Register.

other, (explain:)

\_\_\_\_\_  
Signature of the Keeper

\_\_\_\_\_  
Date of Action

## 6. Function or Use

Historic Functions (enter categories from instructions)

Social - clubhouse  
Domestic - single dwelling  
Recreation - sports  
Domestic - institutional housing

Current Functions (enter categories from instructions)

Commerce - restaurant  
Domestic - hotel (B&B)  
Commerce - specialty shop  
Commerce - other (storage)

## 7. Description

Architectural Classification

(enter categories from instructions)

Late Victorian Shingle and  
Early 20th Century American  
Movements - Bungalow/Craftsman

Materials (enter categories from instructions)

foundation Stone/sandstone  
walls Wood /Weatherboard  
Stucco  
roof Asphalt, Ceramic Tile  
other \_\_\_\_\_

Describe present and historic physical appearance.

Much of Wheeling's social history is reflected in the complex of structures which comprise the original Wheeling Country Club. Begun in 1905, the Club House, designed by Wheeling architect Frederick F. Faris of the Wheeling firm of Giesey & Faris, is an example of the Early 20th Century Movement with several elements of influence - Bungalow/Craftsman drawing upon the earlier Shingle Style. The March 16, 1905 minutes of the Wheeling Country Club state, "Architect F. F. Faris was present with the preliminary drawings of the new building, including elevation and plan of the several floors. While some minor suggestions as to changes were offered, the general scheme seemed to meet the hearty approbation of those present, and it was stated that they were in shape to be promptly developed."

The large, three storied Club House structure faces north away from the City of Wheeling, from atop its place on what became known as Country Club Hill, looking toward its Golf Course. The front north gambreled roof covers a wide veranda which originally surrounded most of three sides of the structure. This wide porch is actually located on the second story, or first story above ground, and is entered by a grand central stair. The veranda has a boxed beam ceiling with crown cornice around the beams. Between the boxed beams is tongue and groove beaded board. The classical portico is supported by Roman Doric columns made of wood, at the outer sides of the recessed porch.

On the east and west roof planes are unusual dormers, matching, hipped roofed, with three on each side. The dormer nearest the front of the Club House has a double window opening, the middle dormer contains three window openings, and the third dormer contains two windows with a central panel of equal size.

United States Department of the Interior  
National Park Service

**National Register of Historic Places  
Continuation Sheet**

Section number 7 Page 2

---

The gable wall above the front porch is stuccoed with half timbering, surrounding original windows which were soon altered to become French doors, opening onto another early addition, a porte cochere. Though the porte cochere was subsequently removed, the grand stairs which lead up to the porch and the main story ballroom have remained covered.

The ballroom may be entered through French doors, with over lights and side lights. At multiple intervals around the porch are triple hung, floor-length windows. This Victorian treatment allowed the windows to be raised for patrons to move in and out of the ballroom onto the veranda.

Once inside, there is continuation of the beam and column construction. The single fireplace is voussoir brick, in trapezoidal shapes. The wooden mantle shelf contains a cornice profile which replicates the cornice of the room. The tile and brick hearth and other features of the room reflect early influences of the Craftsman Style.

Beyond the fireplace is a three-run, open-string stair, originating in the lower level. The ballroom level newel has a single ball decoration, while the third floor landing newel features an incised vertical pattern. The handrailing is molded and is a standard example of factory-made millwork of the period. Wainscoting along the stair toward the third level contains molding strips, again reflecting the Craftsman Style.

The first, or lower, level of the structure could be viewed as a raised basement, though very elegant in that it now contains several formal dining rooms. Sensitively and tastefully designed and decorated, this level has been substantially altered from the original locker rooms of the golf club days.

United States Department of the Interior  
National Park ServiceNational Register of Historic Places  
Continuation SheetSection number 7 Page 3

The third story was constructed to house lodging rooms for members of the Club. Room numbers are still present on several doors. Each room had washroom facilities, and was entered from a central corridor which ran the length of the roomy structure. Here some of the early alterations become evident with original windows opening into added rooms and stairways. The earlier configuration of rooms has remained unchanged.

Ancillary structures were added to the complex as the Wheeling Country Club increased in membership and became more prosperous. These included the golf professional's residence, commonly known as the Franzheim Bungalow as it was originally constructed as a summer cottage for one of the club's founders, Harry C. Franzheim. The design of this structure can be attributed to Edward Bates Franzheim, another noted Wheeling architect. The low-slung structure features a wrap around porch on the south and west sides with wide overhangs and an asymmetrically set front door. The square railings, balusters and columns are unembellished. The roof is long, low pitched, hipped on the ends, and contains recessed shed dormers. The east and south elevations, overlooking the Club's entrance, features bay windows. The porch on the south elevation extends beyond the east elevation creating a pavillion. Built of natural materials, the Franzheim Bungalow blends into the surrounding Golf Course.

The Pro and Caddy House reflects the Club House and features many of its architectural elements, including siding, stucco and a half timbered gable wall. This structure, situated near the first tee, was used by the golfers for tee-off and caddy assignments. Typical to such an operation was the sale and repair of equipment. The Servants' Residence provided lodging for employees of the Club. Used now only for storage, this structure, though secondary to the others, retains many of its original materials and features, including a tile roof, original windows and doors, and siding again reflective of the Club House.

**8. Statement of Significance**

Certifying official has considered the significance of this property in relation to other properties:

nationally     statewide     locally

Applicable National Register Criteria     A     B     C     D

Criteria Considerations (Exceptions)     A     B     C     D     E     F     G

Areas of Significance (enter categories from instructions)

Architecture  
Social History  
Entertainment/Recreation

Period of Significance

1902 - 1936

Significant Dates

1902  
1905  
1936

Cultural Affiliation

N/A

Significant Person

N/A

Architect/Builder

Frederick Faris  
Edward Bates Franzheim

State significance of property, and justify criteria, criteria considerations, and areas and periods of significance noted above.

The Wheeling Country Club complex is significant not only because it contains fine examples of early 20th century architecture by significant Wheeling architects, but, in addition, it represents a glorious era of Wheeling's wealth and history. Borrowing its style from the fashionable coastal resorts, the Club House and supporting structures epitomize summer recreational activity in a relaxed, yet elegant environment.

The Wheeling Country Club was chartered on November 3, 1902. Its founding members and history reflect the development and history of the City of Wheeling. The Club's incorporators were important participants in the city's industrial, financial, transportation, and business heritage that contributed to the growth of the state and nation. The five founders were prominent civic and social leaders within their community:

B. Walker Peterson - "A life long resident of Wheeling, few men have been more closely identified with the business and civic affairs of the city, than B. Walker Peterson." A civil engineer by training, Mr. Peterson was president of Dollar Savings and Trust Company, president of Warwood Tool Company, vice president of Wheeling Traction Company, and "an important factor in manufacturing and financial affairs of the city."

See continuation sheet

United States Department of the Interior  
National Park Service

National Register of Historic Places  
Continuation Sheet

Section number 8 Page 2

---

Harry C. Franzheim - Harry C. Franzheim was "long a prominent figure in the commercial, industrial and financial life of the city." He was a partner in the G. Mendel and Company, a furniture company that later evolved into the H. C. Franzheim Co. He was also founder, president and ex officio director of the Wheeling Board of Trade and director of the National Bank of West Virginia, Security Trust Company, La Belle Iron Works and the Fort Henry Club. Mr. Franzheim "was a citizen who had a keen sense of his civic responsibilities and endeavored at all times to measure up to them. He believed in Wheeling and its destiny and gave freely of his time and means for its advancement."<sup>2</sup>

Benjamin M. Hildreth - Benjamin Hildreth belonged to a prominent Wheeling family, his father being a well-respected physician and a direct decendent of Jonathan Zane, a founder of Wheeling. Mr. Hildreth was actively engaged in the glass business for many years, serving as secretary of the Nickle Plate Glass Works of Fostoria, Ohio, and secretary of the Beaumont Glass Company.<sup>3</sup> The glass industry was important to Wheeling with various companies producing a full-range of glass items from plate glass to utilitarian bottles to fine cut glass made by skilled craftsmen.

John L. Dickey - "A member of one of the old and sterling families of this favored section of the state," Dr. Dickey practiced medicine in which he won an honorable distinction. He found time to make valuable contributions to the press of his profession and as a member of the board of education. He also served as director of the National Exchange Bank, the Security Trust Company, Mutual Electric Company, the City and Elm Grove Railroad, president of National Telephone, a trustee of Linsly (serving as vice president before studying medicine) and "is active in the best interests of society, both as a professional man, and as a private citizen."<sup>4</sup>

United States Department of the Interior  
National Park Service

National Register of Historic Places  
Continuation Sheet

Section number 8 Page 3

---

Samuel S. Bloch - "Bloch Brothers Tobacco Company, a great industry employing fully 500 people. Merely considered as furnishing employment to so many people, it is a factor of importance here, while the excellence of its product has added greatly to the commercial prestige of Wheeling."<sup>5</sup> With his brother, Aaron, Samuel S. Bloch founded the company in 1880 and became well known through its famous product, Mail Pouch Chewing Tobacco. Samuel served as president and treasurer of the company that survives today and still manufactures Mail Pouch.

On December 2, 1902, the above five stockholders, each with one share of stock with a par value of \$100.00 each, met and "ordered that the capital stock of the company be increased to 250 shares with the par value of \$100.00 each, and that such stock be offered for sale for the purpose of raising funds to carry on the business of the company."<sup>6</sup> The next several years were spent on the Constitution and By-laws, with resulting Article II stating that "The Country Club is established for the encouragement of athletic exercises and sports, and the establishment and maintenance of places for reading rooms and social meetings."<sup>7</sup>

The Club grew in membership and property. The site of the Club House and Golf Course resembled a "patchwork quilt" of land purchased or leased. The majority of land was the property known as the Campbell Hill Farm and was leased from Mrs. Jane E. McLure. Additional land was leased from the Highland Golf Club, a holding company, and Jane W. Campbell Bates and William J. Bates, wife and husband. Over the next sixty years, the Club continued to lease, and purchase when available, land in order to operate.

The minutes of the director's meetings reflect that much time and attention was given to the development of facilities, their maintenance and staffing, and membership. The club house initially operated only during the warmer months, opening in May and closing in October. Gradually, the season was expanded to include the Christmas holidays in order for members to utilize the facilities for private parties.

United States Department of the Interior  
National Park Service

National Register of Historic Places  
Continuation Sheet

Section number 8 Page 4

---

Access to the Club was always a matter of concern. In the early 1900's, this area was considered remote from Wheeling, and the improvement of the West Liberty-Bethany Pike (WV Route 88) up the hill, known locally as "Country Club Hill," passed the Club was of concern. One solution in assuring easy access to and from the Club was that the Club provided carriage, then automobile transportation to its members from the junction of Bethany Pike and National Road at the Altenheim stop of the City and Elm Grove line.

The membership grew over the years; there were resident, non-resident, honorary and junior memberships. Women were not granted membership, but designated as associates. The minutes reflect that much time and attention was given to the status of the individual members as to whether their dues were paid, their accounts paid, their conduct was acceptable (some members were warned of their disruptive behavior), and other seemingly petty concerns. One member claimed he was overcharged ten cents and it took board action to grant him a credit to his account.

For thirty years the Club grew and prospered. It was not until the early 1930's that the effect of the stock market crash and resulting depression begin to take a toll on the membership. In order to meet its indebtedness and obligations, particularly for the land leases, the Club had to assess its decreasing membership in greater amounts. The monthly minutes reflect the arrears of dues and the resignation of numerous members. The April 22, 1932 minutes of the Board contains a copy of a letter to the Highland Golf Club stating, in part, "During the last quarter of 1931 and the first quarter of 1932, the Wheeling Country Club lost many members, occasioned in most instances by high dues, \$160.00, per annum plus \$16.00, war tax, or \$176.00. For the same reason it is difficult to obtain new members to replace those resigned, resulting in a large decrease in income, so that the Board of Directors now finds it impossible to meet that part of the rental payable under the lease with the Highland Golf Club...."



United States Department of the Interior  
National Park Service

**National Register of Historic Places  
Continuation Sheet**

Section number 8 Page 5

---

The result, as with so many Wheeling residents and businesses, was that the Wheeling Country Club declared bankruptcy on November 9, 1936. On November 25, 1936, Wheeling Country Club, Inc. was incorporated as a not for profit corporation. Under bankruptcy protection, a plan of reorganization was confirmed on November 27, 1936, which directed the trustee to sell to the newly formed Wheeling Country Club, Inc. the real estate, buildings, and equipment of the former Wheeling Country Club and the Highland Golf Club, the latter having declared bankruptcy at the same time.

The Wheeling Country Club, Inc. continued to operate at its facilities, which are the subject of this nomination, located on the former Campbell Hill Farm until 1980. In that year, the Club relocated to a new club house, swimming, tennis and golfing complex at the top of "Country Club Hill." The Club retained the golf course with the layout being reconfigured to the new location. They then sold into private ownership a 30.82 acre tract containing the original Club House, the Pro and Caddy House, the Servants' Quarters and the Franzheim Bungalow.

Golfing was the major activity, and most likely the primary cause for the founding, of the Wheeling Country Club. During the summers, and especially on holidays, the Club and its Golf Course was the site of many tournaments. Some were for members only, others by invitation. The Club also featured special events such as having Tommy Armour, National Open Golf Champion, give a exhibition in August of 1927, and Gene Sarazen in 1929. At the June 20, 1930 Meeting of the Board of Directors, the Board of the Club elected Robert T. Jones as an Honorary Life Member in the Wheeling Country Club, and the president was requested to cable congratulations to Mr. Jones upon his victory in winning the English Open Golf Championship. The Club also provided tennis courts for its membership, and the minutes reflect that some members felt that the women were monopolizing the courts. The Club House provided facilities for Club sponsored dinners and dances, and, of course, the members could utilize the dining rooms and ballroom for their private functions.

United States Department of the Interior  
National Park Service

National Register of Historic Places  
Continuation Sheet

Section number 8 Page 6

---

As stated previously, this complex of buildings captures the essence of an earlier, genteel era in Wheeling's history. Individually and together the buildings represent a time of affluence and leisure. Additionally, nowhere in Wheeling can one find a finer grouping of four buildings representing the Bungalow/Craftsman period. They are also representative works of significant Wheeling architects:

Frederick F. Faris (1870-1927) was considered at the time of his death to be dean of Wheeling's architects, and had the distinction at that time of designing the tallest building, the Schmulbach Building, and the longest building, the Market Auditorium, in the state. Other structures of note include Wheeling Electric Company, the First National Bank of West Virginia, the Wheeling Intelligencer, the former public library, the Scottish Cathedral, and numerous schools including Triadelphia Junior High School and Madison School. Many of his buildings stand today as contributing buildings in Wheeling's historic districts. Regretfully, several of his buildings have been demolished.

"At the onset of his career as an architect, Mr. Faris became associated with the E. W. Wells architect firm. He later formed a partnership with Joseph Leiner under the name of Faris & Leiner. That partnership was dissolved and Mr. Faris became a partner in the company of Franzheim, Giese & Faris. Mr. Franzheim retired from that company and the firm then continued under the name of Faris & Giese. For the past (last) 21 years Mr. Faris maintained his own organization."<sup>8</sup>

"Mr. Faris was a very public spirited citizen and did much to further the advancement, both material and idealistic, of the city of Wheeling. The many beautiful buildings for which he drew the plans stand as memorials to Mr. Faris, who succeeded in each endeavor to add to the architectural beauty of the city. In the erection of several buildings in the city and state Mr. Faris donated his services, which indicates, in a positive manner, the public spiritedness which he invariably placed before material gain. He was an active club worker in various organizations throughout th city, and the members of these organizations as well as his large circle of friends will sincerely mourn the passing of Mr. Faris."<sup>9</sup>

United States Department of the Interior  
National Park Service

**National Register of Historic Places  
Continuation Sheet**

Section number 8 Page 7

---

Edward Bates Franzheim (1866-1942) was "probably (one of) the most successful and best known architects in the state of West Virginia. He does all classes of architecture and has designed many of the most elaborate buildings in Wheeling."<sup>10</sup> Mr. Franzheim is responsible for nine buildings in the Wheeling Historic District and two structures listed individually on the National Register of Historic Places: the Lower Centre Market House and the Harry C. and Jessie F. Franzheim House. Though his list of commercial and institutional projects is extensive, it was in his residential work that Edward Bates Franzheim best demonstrated his versatility and skills as an architect. He designed some of the most elaborate residences of Wheeling. Among these, the Franzheim house and Fulton house are examples of large, rambling Shingle Style, while his Italian Renaissance residences include Henry G. Stifel's "Shadow Knoll," the Behrens-Bippus house and the L. Woodward Franzheim house. Other representative styles in which he excelled include Colonial, Spanish Colonial and Queen Anne.

"His great ability and dedication to his profession are witnessed by the fact that, even today, well over a century after his birth, one can walk through this city and almost certainly recognize his works through their intrinsic beauty, design and detailing. It is possibly safe to say that nothing finer has ever been built here."<sup>11</sup>

United States Department of the Interior  
National Park Service

National Register of Historic Places  
Continuation Sheet

Section number 8 Page 8

---

Notes

1. Charles A. Wingerter, Editor, History of Greater Wheeling and Vicinity (Chicago: The Lewis Publishing Co.) p. 522.
2. The Wheeling Register (Wheeling) April 28, 1915.
3. Gibson Lamb Cranmer, History of Wheeling City and Ohio County, West Virginia and Representative Citizens, 1776-1900 (Chicago: Chicago Biographical Publishing Co.) p. 657.
4. History of the Upper Ohio Valley (Madison: Brant & Fuller Printing Co.) pp. 266-267.
5. Wingerter, History of Greater Wheeling and Vicinity, p. 523.
6. Minutes of the Wheeling Country Club (Wheeling) December 2, 1902, p. 4.
7. Minutes of the Wheeling Country Club (Wheeling) January 23, 1905, p. 7.
8. The Wheeling News Register (Wheeling) June 21, 1927.
9. The Wheeling Intelligencer (Wheeling) June 21, 1927.
10. Cranmer, History of Wheeling City and Ohio County, West Virginia and Representative Citizens, 1776-1900 p. 331.
11. Brooks Wigginton, FASLA, "Edward Bates Franzheim" unpublished paper, p.7.

United States Department of the Interior  
National Park Service

## National Register of Historic Places Continuation Sheet

Section number 9 Page 2

---

### Bibliography

History of the Upper Ohio Valley. Madison, WI: Brant & Fuller Printing Co. 1890.

Cranmer, Gibson Lamb. History of Wheeling City and Ohio County, West Virginia and Representative Citizens, 1776-1900. Chicago, IL: Chicago Biographical Publishing Co. 1902.

Minutes of the Wheeling Country Club. Wheeling, WV. 1902-1933.

Wheeling Intelligencer, The. Wheeling, WV.

Wheeling News Register, The. Wheeling, WV.

Wigginton, FASLA, Brooks E. "Edward Bates Franzheim". unpublished.

Wingerter, Charles A. History of Greater Wheeling and Vicinity. Chicago, IL: The Lewis Publishing Co. 1912.

United States Department of the Interior  
National Park Service

**National Register of Historic Places  
Continuation Sheet**

Section number Photos Page       

---

Photographs

Wheeling Country Club  
Wheeling, WV  
Ben Schneider  
23 January 1990  
Schneider Studio, 1127 Main Street, Wheeling, WV

1. Club House - North Elevation
2. Club House - West Elevation
3. Club House - East & North Elevations
4. Franzheim Bungalow - West Elevation
5. Franzheim Bungalow - South Elevation
6. Franzheim Bungalow - North & West Elevations
7. Pro and Caddy House - East & North Elevations
8. Servants' Quarters - North Elevation
9. Servants' Quarters - North and East Elevations

United States Department of the Interior  
National Park ServiceNational Register of Historic Places  
Continuation SheetSection number 10 Page 2

Beginning at a point in West Virginia Route No. 88, said beginning point being the following three (3) bearings and distances from another point in West Virginia Route No. 88, said point also the beginning point for Parcel No. 1 as recorded in Deed Book No. 613, Page 757, N.  $13^{\circ} 30'$  E. 173.50', N.  $05^{\circ} 30'$  E. 96.00' and N.  $09^{\circ} 00'$  W. 130.00'.

Thence from said beginning point the following bearings and distances: N.  $55^{\circ} 30'$  W. 42.59' to a point; thence S.  $00^{\circ} 24'$  E. 100.00' to a point; thence S.  $16^{\circ} 00'$  W 80.00' to a point; thence S.  $33^{\circ} 53'$  W. 270.00' to a point; thence S  $26^{\circ} 30'$  W. 150.00' to a point; thence S.  $37^{\circ} 30'$  W. 130.00' to a point; thence S.  $53^{\circ} 12'$  W. 80.00' to a point; thence S.  $78^{\circ} 34'$  W. 50.00' to a point; thence N.  $78^{\circ} 25'$  W. 50.00' to a point; thence N.  $56^{\circ} 45'$  W. 150.00' to a point; thence S.  $40^{\circ} 30'$  W. 35.00' to a point; thence N.  $51^{\circ} 38'$  W. 212.00' to a point; thence N.  $36^{\circ} 07'$  E. 158.00' to a point; thence S.  $24^{\circ} 40'$  E. 39.00' to a point; thence S.  $83^{\circ} 03'$  E. 72.94' to a point; thence S.  $62^{\circ} 00'$  30" E 167.41' to a cross; thence N.  $63^{\circ} 23'$  E. 28.20' to a point; thence N.  $18^{\circ} 05'$  E. 454.66' to a point; thence S.  $84^{\circ} 13'$  E. 61.39' to an iron pin; thence N.  $03^{\circ} 32'$  E. 20.00' to a point; thence S.  $87^{\circ} 00'$  E. 85.00' to a point; thence S.  $03^{\circ} 00'$  W. 312.00' to a point thence N.  $31^{\circ} 46'$  E. 95.00' to a point; thence N.  $36^{\circ} 32'$  E. 120.00' to a point; thence N.  $19^{\circ} 06'$  E. 80.00' to a point; thence N.  $01^{\circ} 00'$  W 120.00' to a point; thence No.  $20^{\circ} 20'$  E. 75.10' to a point; thence S.  $69^{\circ} 40'$  E. 26.61' to a point; thence S.  $02^{\circ} 00'$  W. 60.00' to a point; thence S.  $09^{\circ} 00'$  E 46.03' to said point of beginning, containing 4.465 Acres, plus or minus.

9. Major Bibliographical References

See continuation sheet

Previous documentation on file (NPS): N/A

- preliminary determination of individual listing (36 CFR 67) has been requested
- previously listed in the National Register
- previously determined eligible by the National Register
- designated a National Historic Landmark
- recorded by Historic American Buildings Survey # \_\_\_\_\_
- recorded by Historic American Engineering Record # \_\_\_\_\_

See continuation sheet

Primary location of additional data:

- State historic preservation office
- Other State agency
- Federal agency
- Local government
- University
- Other

Specify repository:

Wheeling Country Club Minutes Archives, Blue Pencil Club for Wigginton paper.

10. Geographical Data

Acreeage of property 4.465

UTM References

A 

17	527080	4437720
Zone	Easting	Northing

C 

--	--	--

B 

Zone	Easting	Northing

D 

--	--	--

See continuation sheet

Verbal Boundary Description

See continuation sheet

Boundary Justification

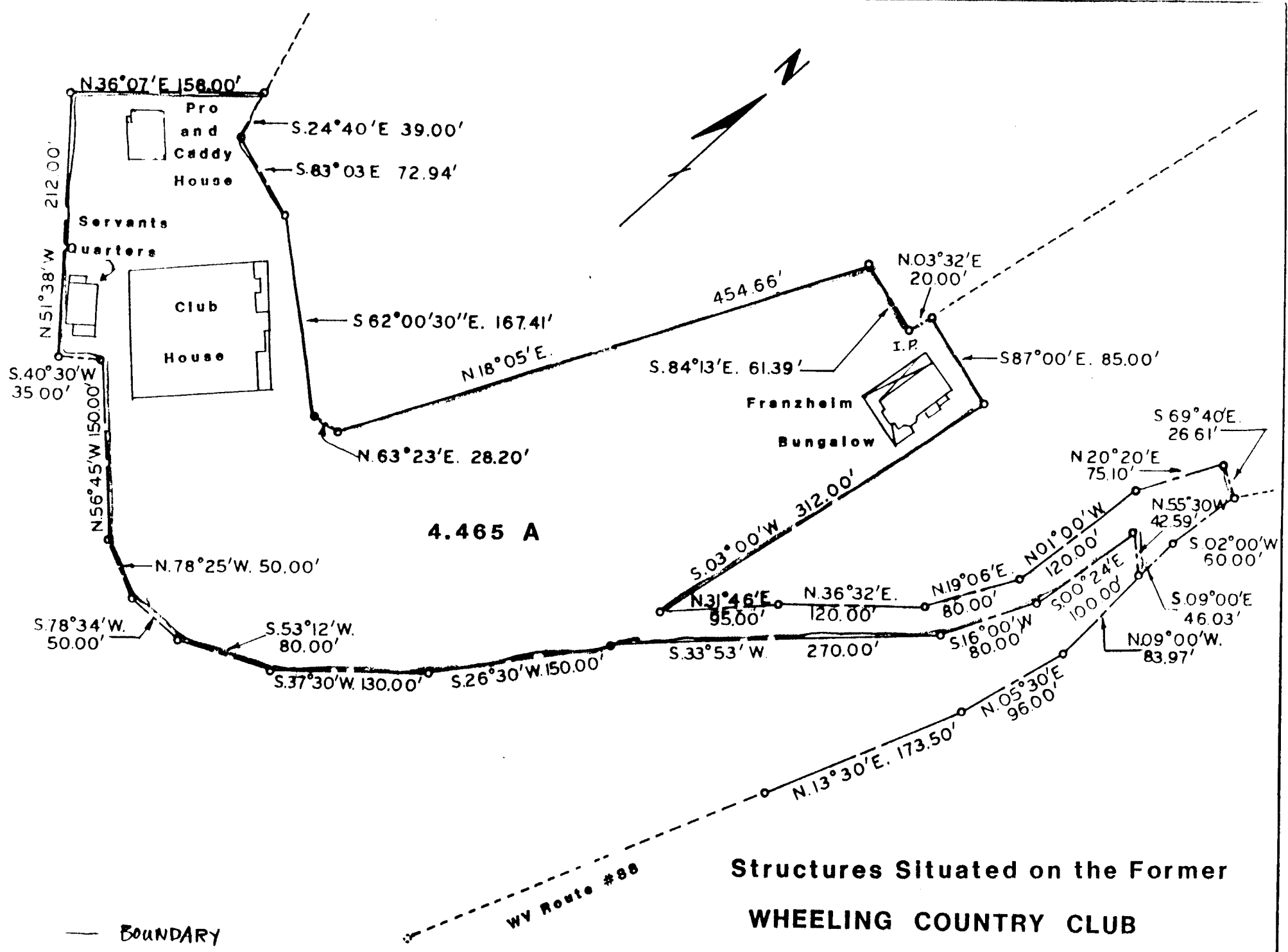
The nominated property encompasses the four structures which constitute this nomination, along with supporting driveways and parking areas. The Golf Course was not included because it was altered to accommodate the relocation of the new facilities.

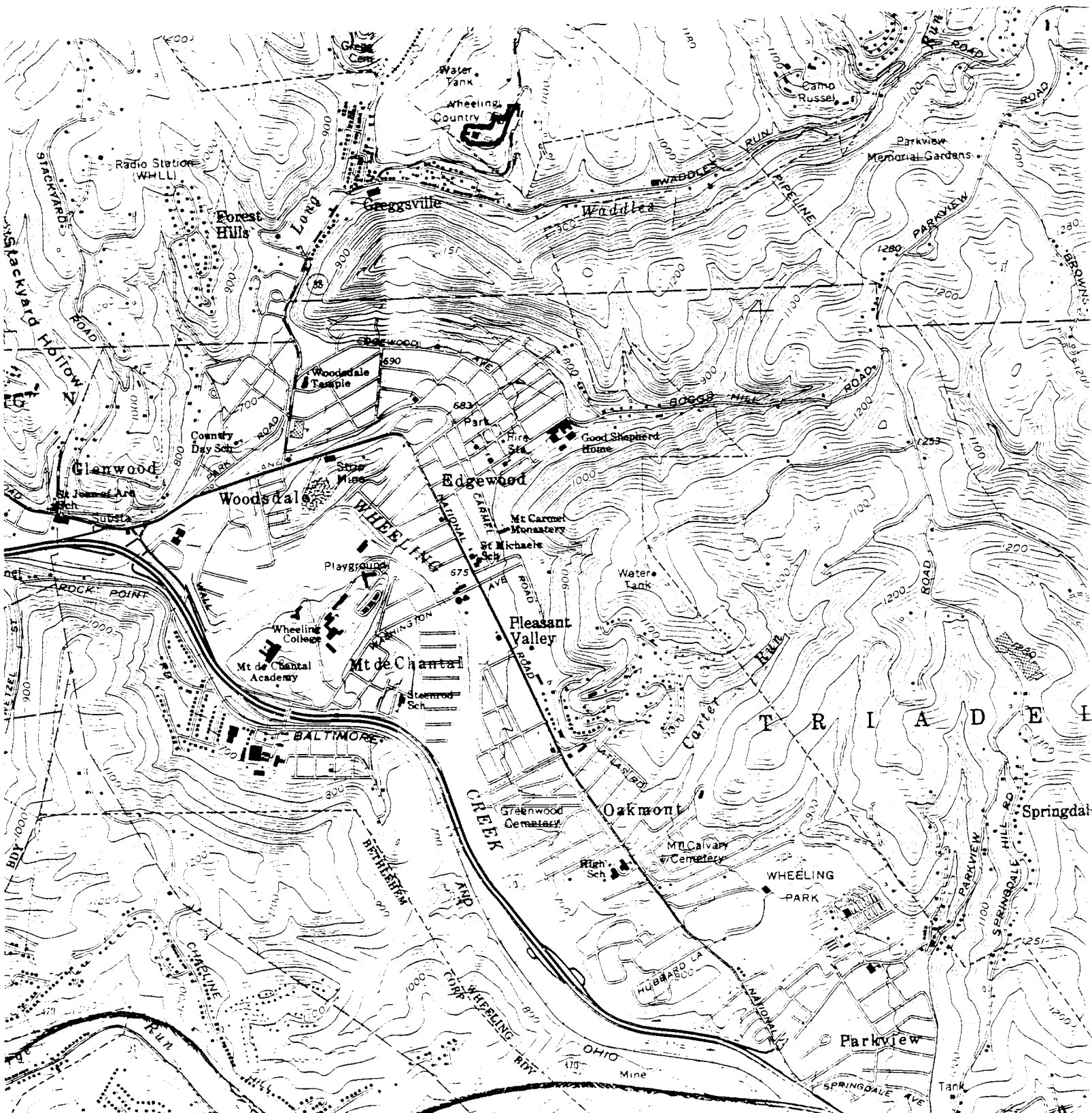
See continuation sheet

11. Form Prepared By

name/title Harriette Hopkins, AICP date January 15, 1990  
 organization \_\_\_\_\_ telephone 304/234-3701  
 street & number 1128 Eoff Street state WV zip code 26003  
 city or town Wheeling, WV







WHEELING COUNTY  
 300' ...  
 WHEELING COUNTY  
 W.VA.  
 11/30/80/4481/170

770 000 FEET  
 (OHIO)

